

EMPOWERING PRIMARY HEALTH CARE

Dr Renzo De Gabriele MD MMCFD Cert. Diab. (ICGP)

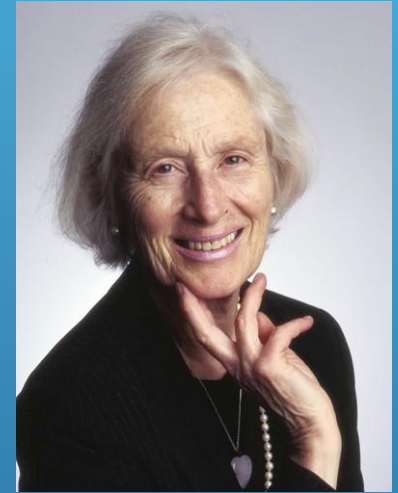
Chief Executive Officer

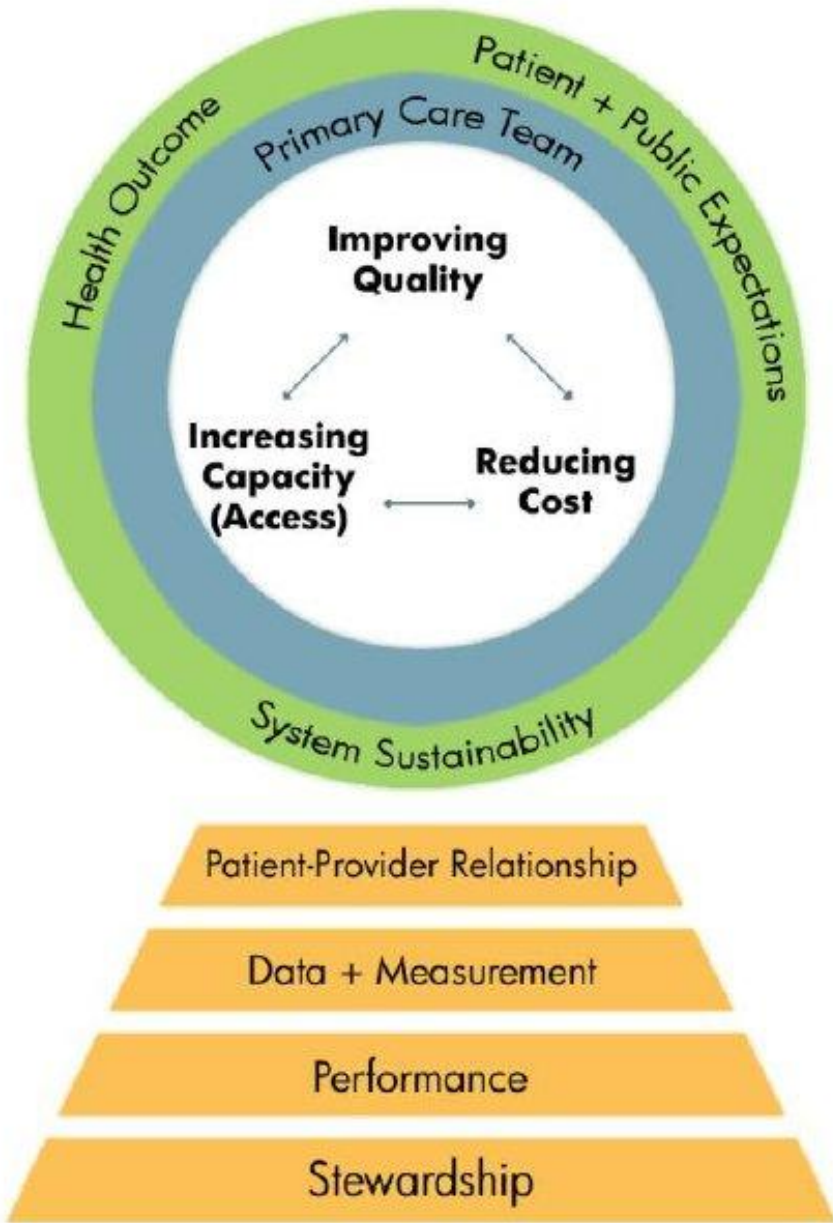
Primary Health Care Department

Standing Committee on Health - 11th March 2015

COMPREHENSIVE PRIMARY CARE

- ▶ Long-term relationship between patient and provider in which medical services, support for self-care and care coordination are the foundation.
- ▶ Patient-focused rather than disease-focused (holistic)
- ▶ Timely
- ▶ Research has associated comprehensive primary care with better system quality, equity and efficiency (reduced cost).
- ▶ Benefits will be reaped over time.
- ▶ “The Starfield Model” – an approach to measuring quality, capacity and total system cost





THE STARFIELD MODEL

PHCD Strategy

```
graph TD; A([PHCD Strategy]) --- B[Prevention]; A --- C[Services]; A --- D[Infrastructure]; A --- E[Equipment];
```

Prevention

Services

Infrastructure

Equipment

Prevention

Screening

Immunization

Health Education

School Services



Screening

- ▶ Introduce **Cervical Screening** for 25 – 35 year age group
- ▶ Increase age bracket of **Breast Screening** (50 – 65 year olds)
- ▶ Increase age bracket of **Colon Screening** (51 – 61 year olds)

Prevention

Immunization

- ▶ **Human Papilloma Virus Vaccine** to prevent most types of cervical cancer (79% in 2013; 87.5% in 2014)
- ▶ **Immunization services** have been re-engineered to have 97 more hours of patient contact per month
 - ▶ zero added cost as regards HR
- ▶ **Evening and afternoon sessions at Immunization**
 - ▶ zero added cost as regards HR
- ▶ Planned expansion of travel vaccination hours

Prevention

Health Education

- ▶ **Lifestyle Clinics** in certain Bereġ
 - ▶ Zurrieq, San Gwann, Tarxien, Kalkara, Msida, Gżira, Gudja
- ▶ **Health promotion activities** in collaboration with HPU
 - ▶ World Kidney Day, World Diabetes Day, outreach activities in local councils, etc
- ▶ **Media Promotion Campaigns**
 - ▶ Facebook page
 - ▶ Liaison with Blood Bank
 - ▶ Flyers
 - ▶ Free services to local councils

Prevention

School Services

- ▶ **School Medical Services** throughout primary schools
- ▶ **Scoliosis Screening** at Floriana Health Centre
- ▶ **School Immunization Programme**
- ▶ Manpower request to increase activity in secondary school sector

Prevention

Infrastructure

Refurbishment

New Premises



STRENGTHEN INFRASTRUCTURE

- ▶ Ongoing process as there is a continuous
 - ▶ increase in demand
 - ▶ development of new technologies
- ▶ Aim is to have proper infrastructure with high quality equipment of the latest technology compatible with MDH
- ▶ This will permit
 - ▶ High quality service delivery
 - ▶ Staff motivation and enthusiasm
 - ▶ Less referrals to secondary care
 - ▶ Holistic treatment
 - ▶ One stop shop



Refurbishment

- ▶ **Mosta Health Centre** Refurbished
- ▶ **Rabat Health Centre** Refurbished
- ▶ **Floriana Health Centre** in 3rd phase of refurbishment
 - ▶ 1st Phase – Immunization wing
 - ▶ 2nd Phase – New Wing for Physio, Podiatry, Diabetes, Ophthalmic
 - ▶ 3rd Phase – Central reception, new cold room, bigger generator
- ▶ Upkeep of **Paola Health Centre** is ongoing
- ▶ New **generators** for Paola, Mosta and Rabat
- ▶ Programme of refurbishment of health centres
- ▶ **Bereġ** Refurbishment

Infrastructure

New Premises

- ▶ **Kirkop Health Centre**
- ▶ **Paola Regional Hub** (ERDF application)
- ▶ **Physiotherapy wing at B'Kara Health Centre**
- ▶ **Bereġ relocation** where possible in collaboration with local councils

Infrastructure

Equipment

- ▶ 2 Digital X-ray Machines
- ▶ 2 Fundus Cameras
- ▶ 3 Vascular Dopplers
- ▶ Interferential Units and Ultrasound for Physiotherapy Department
- ▶ Podiatry instruments
- ▶ ECG Machines
- ▶ Ophthalmic equipment (auto-refractor, glaucoma machines)
- ▶ Various specialized couches
- ▶ Mosta and Rabat Health Centre were stocked with completely new equipment in all areas



Services

Consolidation

New Services

Consolidation

- ▶ **B'Kara Health Centre opening hours** are now in line with others (previously Monday to Friday 8am – 1pm)
- ▶ **Orthopaedic Outreach Clinics** have increased in frequency (Mosta, Paola, Qormi)
- ▶ **Physiotherapy Access** to Private GPs
- ▶ **X-Ray access** to Private GPs
- ▶ **Bone Density requests** can be done by all medical practitioners in Malta and Gozo (previously only Orthopaedic and Gynae consultants) – no waiting list and results given to patients

Services

New Services

1

- ▶ **Anticoagulant Clinics** (Paola, Cospicua, Qormi, Floriana, B'Kara, Rabat, Gozo)
- ▶ **Chronic Disease Management Clinics** – holistic patient care (Qormi, Rabat till now)
- ▶ **Digital X Ray machines** at Paola and Floriana Health Centres
- ▶ Conversion of Gzira and Qormi X-Ray machines into digital X-Ray Machines
- ▶ **Backslab plaster service** from Floriana Health Centre (previously only Mosta).
 - ▶ Soon all digitalized Health Centres will have this facility – no MDH referrals
- ▶ **Lifestyle Clinics** in Bereġ

Services

New Services

2

▶ Minor Operations at Mosta Health Centre

- ▶ Orthopaedic
- ▶ Surgical
- ▶ Ophthalmic
- ▶ Dermatology

▶ Outreach Clinics

- ▶ Orthopaedic
- ▶ Cardiology
- ▶ NAPRO technology
- ▶ Paediatric
- ▶ Genitourinary
- ▶ Fibromyalgia

Services

New Services

3

- ▶ **Retinal Cameras** (Floriana and Mosta Health Centres)
- ▶ **Vascular Dopplers** (Paola, B'Kara, Floriana)
- ▶ **New Migrant Liaison Office** to cater for this select population (including services of cultural mediators at Floriana Health Centre)
- ▶ **Call Centre** for appointments
- ▶ **PPP** – involving the private sector to make a level playing field
- ▶ **B'Kara Physiotherapy Department**

Services

PRIMARY HEALTH CARE EMPOWERMENT

All this will help empower Primary Care in order to follow the “Starfield Model”.

This will lead to

- ▶ a better quality system,
- ▶ equity
- ▶ efficiency (reduced cost)



REFERENCES

1. Shi L, Starfield B, Kennedy BP, Kawachi I. Income inequality, primary care, and health indicators. *J Fam Pract*. 48 (1999), 275--84.
2. Starfield B. Family medicine should shape reform, not vice versa. *Fam Pract Man*. May 28, 2009; Global health, equity, and primary care. *J Am Board Fam Med*. 20(6) (2007), 511--13; Is US health really the best in the world? *JAMA*. 284(4) (2000), 483--4; Research in general practice: co-morbidity, referrals, and the roles of general practitioners and specialists. *SEMERGEN*. 29(Suppl 1) (2003), 7--16, Appendix D.
3. Starfield B, Shi L. Policy relevant determinants of health: an international perspective. *Health Policy*. 60 (2002), 201--18.
4. Starfield B, Shi L, Macinko J. Contribution of primary care to health systems and health. *Milbank Quarterly*. 83(3) (2005), 457--502.
5. Increasing Value for Money in the Canadian Healthcare System, Hollander et al. *Healthcare Quarterly* Vol 12 No. 4 2009